



# THE ORGANIC MEAT COMPANY LIMITED

PROCESSORS & EXPORTERS OF WORLD CLASS HALAL  
BEEF, MUTTON MEAT & OFFALS

PRODUCT  
CATALOG

產品目錄

**Plant Address:** Survey # 310, Deh Shah Mureed, Gadap,  
Karachi-Pakistan

Email: [info@tomcl.net](mailto:info@tomcl.net) Web: [www.tomcl.net](http://www.tomcl.net)



# BEEF BY-PRODUCTS

## 牛肉 副产品



FROZEN BEEF AORTAS



EXPIRY DATE: FROZEN -18°C,  
EXPIRES 6 MONTHS FROM  
PRODUCTION DATE  
PRODUCT WEIGHT:  
NOT LESS THAN 19KG



FROZEN BEEF PIZZLE



EXPIRY DATE: FROZEN -18°C,  
EXPIRES 6 MONTHS FROM  
PRODUCTION DATE  
PRODUCT WEIGHT:  
NOT LESS THAN 20KG



FROZEN CUTS BEEF  
PADDYWACKS



EXPIRY DATE: FROZEN -18°C,  
EXPIRES 6 MONTHS FROM  
PRODUCTION DATE  
PRODUCT WEIGHT:  
NOT LESS THAN 15KG



FROZEN BEEF  
SALTED TRIPES



EXPIRY DATE: FROZEN -18°C,  
EXPIRES 6 MONTHS FROM  
PRODUCTION DATE  
PRODUCT WEIGHT:  
NOT LESS THAN 15KG



FROZEN BEEF  
ACHILLE TENDONS



EXPIRY DATE: FROZEN -18°C,  
EXPIRES 6 MONTHS FROM  
PRODUCTION DATE  
PRODUCT WEIGHT:  
NOT LESS THAN 15KG



FROZEN BEEF  
FLEXOR TENDONS



EXPIRY DATE: FROZEN -18°C,  
EXPIRES 6 MONTHS FROM  
PRODUCTION DATE  
PRODUCT WEIGHT:  
NOT LESS THAN 15KG



FROZEN BEEF TAILS



EXPIRY DATE: FROZEN -18°C,  
EXPIRES 6 MONTHS FROM  
PRODUCTION DATE  
PRODUCT WEIGHT:  
NOT LESS THAN 15KG



FROZEN BEEF SALTED  
OMASUM



EXPIRY DATE: FROZEN -18°C,  
EXPIRES 6 MONTHS FROM  
PRODUCTION DATE  
PRODUCT WEIGHT:  
NOT LESS THAN 20KG





FROZEN BEEF  
HONEYCOMBS



EXPIRY DATE: FROZEN -18°C,  
EXPIRES 6 MONTHS FROM  
PRODUCTION DATE  
PRODUCT WEIGHT:  
NOT LESS THAN 15KG



FROZEN BEEF T TRIPES



EXPIRY DATE: FROZEN -18°C,  
EXPIRES 6 MONTHS FROM  
PRODUCTION DATE  
PRODUCT WEIGHT:  
NOT LESS THAN 20KG



FROZEN BEEF KIDNEYS



EXPIRY DATE: FROZEN -18°C,  
EXPIRES 6 MONTHS FROM  
PRODUCTION DATE  
PRODUCT WEIGHT:  
NOT LESS THAN 19KG



FROZEN BEEF  
TRACHEAS



EXPIRY DATE: FROZEN -18°C,  
EXPIRES 6 MONTHS FROM  
PRODUCTION DATE  
PRODUCT WEIGHT:  
NOT LESS THAN 15KG



FROZEN BEEF FEET



EXPIRY DATE: FROZEN -18°C,  
EXPIRES 6 MONTHS FROM  
PRODUCTION DATE  
PRODUCT WEIGHT:  
NOT LESS THAN 15KG



FROZEN BEEF SPLEENS



EXPIRY DATE: FROZEN -18°C,  
EXPIRES 6 MONTHS FROM  
PRODUCTION DATE  
PRODUCT WEIGHT:  
NOT LESS THAN 19KG



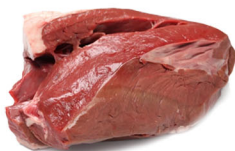
FROZEN BEEF RIBS  
BONE IN



EXPIRY DATE: FROZEN -18°C,  
EXPIRES 6 MONTHS FROM  
PRODUCTION DATE  
PRODUCT WEIGHT:  
NOT LESS THAN 19KG



FROZEN BEEF HEARTS



EXPIRY DATE: FROZEN -18°C,  
EXPIRES 6 MONTHS FROM  
PRODUCTION DATE  
PRODUCT WEIGHT:  
NOT LESS THAN 19KG



FROZEN BEEF  
SCAPULAR CARTILAGE



EXPIRY DATE: FROZEN -18°C,  
EXPIRES 6 MONTHS FROM  
PRODUCTION DATE  
PRODUCT WEIGHT:  
NOT LESS THAN 15KG



FROZEN BEEF TESTICLES



EXPIRY DATE: FROZEN -18°C,  
EXPIRES 6 MONTHS FROM  
PRODUCTION DATE  
PRODUCT WEIGHT:  
NOT LESS THAN 19KG





FROZEN BEEF LIVERS



EXPIRY DATE: FROZEN -18°C,  
EXPIRES 6 MONTHS FROM  
PRODUCTION DATE  
PRODUCT WEIGHT:  
NOT LESS THAN 20KG



FROZEN BEEF TONGUES



EXPIRY DATE: FROZEN -18°C,  
EXPIRES 6 MONTHS FROM  
PRODUCTION DATE  
PRODUCT WEIGHT:  
NOT LESS THAN 15KG



BEEF TRIMMINGS

牛碎肉

TRIMMINGS 35/65



EXPIRY DATE: FROZEN -18°C,  
EXPIRES 6 MONTHS FROM  
PRODUCTION DATE  
PRODUCT WEIGHT:  
NOT LESS THAN 15KG

TRIMMINGS 80/20



EXPIRY DATE: FROZEN -18°C,  
EXPIRES 6 MONTHS FROM  
PRODUCTION DATE  
PRODUCT WEIGHT:  
NOT LESS THAN 15KG

FROZEN BEEF STEAKS



EXPIRY DATE: FROZEN -18°C,  
EXPIRES 6 MONTHS FROM  
PRODUCTION DATE  
PRODUCT WEIGHT:  
NOT LESS THAN 19KG

FROZEN BEEF  
MEDALLIONS



EXPIRY DATE: FROZEN -18°C,  
EXPIRES 6 MONTHS FROM  
PRODUCTION DATE  
PRODUCT WEIGHT:  
NOT LESS THAN 19KG

FROZEN BEEF  
WITHOUT BONE



EXPIRY DATE: FROZEN -18°C,  
EXPIRES 6 MONTHS FROM  
PRODUCTION DATE  
PRODUCT WEIGHT:  
NOT LESS THAN 19KG

FROZEN BEEF  
WITH BONE



EXPIRY DATE: FROZEN -18°C,  
EXPIRES 6 MONTHS FROM  
PRODUCTION DATE  
PRODUCT WEIGHT:  
NOT LESS THAN 19KG

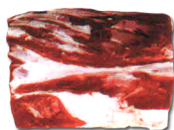


# BEEF CUTS

## 大肠马口



1 - Striploin



2 - Cube Roll



3 - Rump



4 - Cap of Rump



5 - Rump Tail



6- Inside Skirt



7- Top Side



8- Flat



9 - Eye Round



10 - Shank



11 - Knuckle



12 - Chuck



13 - Hump



14 - Shoulder



15 - Brisket



16 - Rib



17 - Tenderloin



PACKING TYPE



CHILLED BEEF  
4PCS WITH  
CLOTH PACKING



EXPIRY DATE: CHILLED 0 TO 4°C,  
EXPIRES 21 DAYS FROM  
PRODUCTION DATE  
PRODUCT WEIGHT:  
NOT LESS THAN 30KG



CHILLED MUTTON  
1PIECE WITH  
CLOTH PACKING



EXPIRY DATE: CHILLED 0 TO 4°C,  
EXPIRES 21 DAYS FROM  
PRODUCTION DATE  
PRODUCT WEIGHT:  
NOT LESS THAN 8 to 12 KG



# BEEF BALL 牛肉丸

FROZEN VACUUM  
BEEF BALL



EXPIRY DATE: FROZEN -18°C,  
EXPIRES 6 MONTHS FROM  
PRODUCTION DATE  
PRODUCT WEIGHT:  
NOT LESS THAN 19KG



# PRODUCT PACKAGING

